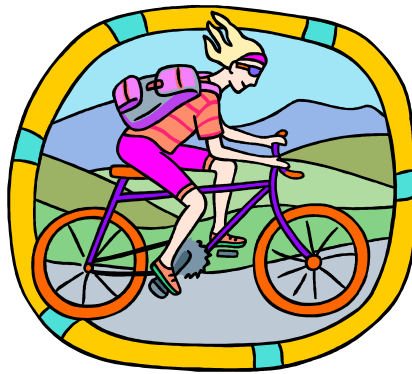




**MAKE THE MOST OF THE  
“BIG OUTDOORS” AND THE “INDOORS”  
– IT’S FREE\***

**ALL THIS EQUIPMENT AND MORE + SUPPORT IS ON YOUR DOORSTEP  
(AT SUTTON YOUTH SERVICE – FREE FOR VOLUNTARY AND EDUCATIONAL  
GROUPS WITHIN THE LONDON BOROUGH OF SUTTON)**

**Do you want to hire mountain bikes for  
summer trips?**



**We can also provide OS maps and compasses to go along  
with suggested route maps for your group.**



**DO you need to hire a trailer to transport  
bikes and other equipment?**



Contact Debbie or Paul on 020 8687 0239 – [projectsoffice@suttonlea.org](mailto:projectsoffice@suttonlea.org)  
2 weeks notice required – groups to take responsibility for equipment

# Children, Young People & Learning Services

## LONDON BOROUGH OF SUTTON YOUTH SERVICE POOL EQUIPMENT – CONDITIONS OF HIRE

### ELIGIBILITY

The following list of Miscellaneous Pool equipment is available for hire by the following groups within/registered with, the London Borough of Sutton:

Maintained Youth Centres/ Projects,  
Registered Voluntary Groups,  
Registered Youth Organisations,  
Duke of Edinburgh's Award Operating Units

Equipment is loaned subject to serviceability at the time of issue and acceptance of a booking does not guarantee availability

### APPLICATION

Free hire is available for all equipment when the hirer accepts the full responsibility for any loss or damage by indicating **YES** on the booking form. Applications must be made using this form and can be accepted via email from a representative of the organisation clearly stating their acceptance of the hire conditions and giving (where possible), at least 14 days notice prior to the intended use – stating the dates for the intended collection and return.

Alternatively, the cost of the hire is based on use for a period of up to 7 days. A surety deposit of £200 is then required, made payable to the London Borough of Sutton, all charges must be paid at the time of collection, by cheque. Payments by cash will only be accepted in exceptional circumstances. Out of Borough users will incur an added cost.

Any cancellations received, for any reason, within 7 days of first date of hire, will incur a minimum charge of £20 (including youth service hirers).

Any unauthorised late returning of equipment will result in a minimum of £5 a day charge to the hiring organisation.

### COLLECTION

Collection and return of equipment is the responsibility of the hirer. Arrangement times should be made with the Pool Equipment Supervisor, Paul Laramy. If you need any help with choosing the right equipment you can visit the centre or talk to Paul Laramy or Paul Matthews.

Some equipment is very heavy (e.g. projectors and marquees). The person collecting it should be capable of carrying it.

Some equipment is delicate (e.g. projectors and video records). Safe and appropriate transport is essential.

### USE

1. Equipment must be used under the supervision of a responsible adult. And only for the purpose intended.
  2. Equipment not in use must be stored in a secure place and must not be left in a vehicle or on a trailer unattended.
  3. There is no insurance for loss or damage due to inappropriate use, or theft.
- For use outside the UK special arrangements must be made.

## **RETURN**

All equipment must be returned clean and properly packed with all items checked and ready for further use. Tents and sleeping bags should be dry. Before packing tents the sewn in groundsheet should be wiped clean. Video batteries should be charged.

Should there be any damage or deficiencies, a label indicating this must be tied to the equipment when it is returned. Any damage must be reported to the Equipment Store Supervisor and a Damage Report form completed when the equipment is returned.

If equipment is lost or stolen a Theft Report form must be completed.

It is expected that equipment will be returned in the condition it is found and users will be charged for any repairs or damage, which isn't seen as normal wear and tear.

For more information please contact

Paul Matthews – Outdoor Education Co-ordinator

Paul Laramy- Equipment Store Manager - Tuesday & Friday 10am-2pm

Debbie Ryan - Pool Equipment Bookings - Mon. –Thurs. 10am-1pm

All of the above people are available on:

Tel/Fax 020 8687 0239 – [projectsoffice@suttonlea.org](mailto:projectsoffice@suttonlea.org)

At: Projects Office, The Quad, Green Wrythe Lane, Carshalton, Surrey. SM5 1JW

## **DISCLAIMER**

Please note that this equipment is hired at your own risk. The Local Authority would recommend that you purchase suitable insurance cover to ensure that you are insured in the event of any accident or damage caused during the use of this equipment.

## Camping/Outdoor Equipment

ITEM	COST
<b>Octane 2 Red</b> An orange coloured lightweight 2 person tent, suitable for D of E bronze level & non wild country camping.	£ 11
<b>Octane 3 Red</b> An orange coloured lightweight 3 person tent suitable for D of E bronze level & non wild country camping.	£ 11
<b>Vango Dakota 300 Dome/Delta (12)</b> This is a 3-person tent. This is similar to the Vango Delta 300 plus shown below. Please note that the colours may be different.	£ 11



<b>Vango Mark 3 Force 10 (6)</b> 2-3 Person	£ 11
--	------



<b>Vango Mark 4 Force 10 (2)</b> 3-4 Person	£11 £ 11
--	-------------

ALL The above tents are appropriate for Bronze Duke of Edinburgh and low-level expeditions in summer conditions.

<b>Quasar (11)</b> 2-3 Person
----------------------------------



£14

<b>Trisar Ultra (4)</b> 2 Person
-------------------------------------



All the above are lightweight mountain tents, which are appropriate for Duke of Edinburgh Gold and Silver expeditions in wild country.

**Mess Tent** **£ 32**  
This is a large tent, which is approximately 12 feet square (4 meters square).  
Please note that the sides are NOT detachable

**Tent – Gazebo (2)** **£ 5**  
1 is approximately 2.7meters square  
1 has sides

**Tent - Summer House** **£ 5**  
This is a hexagonal structure similar to a Gazebo and is  
approximately 3 meters in width

**Mallets – Rubber (2)**

**Bivvi Bags (10)** **£ 6**  
Gortex- this is a lightweight breathable emergency-sleeping sac and is NOT  
designed to be used in place of a sleeping bag.



**Rucksacks :** **£ 4**  
Mens 75 ltr (5)  
Mens 70 ltr (8)  
Mens 65 ltr (10)

Ladies 60 ltr (4)  
Ladies 55 ltr (9)  
Ladies 50 ltr (7)

Daysacks (16)

**Sleeping Bag (44)** **£ 4**  
A 3-season sleeping bag, includes a cotton sleeping bag liner. It is expected  
that the liner be used. If the sleeping bag is used without the liner then an  
additional charge will be made for cleaning.

**Sleeping Bag (4)**  
Emergency fleece  
This is Similar to a sleeping bag in size. **IT IS NOT DESIGNED TO BE A  
SUBSTITUTE FOR A SLEEPING BAG.** It should only be used in an  
emergency where additional warmth is needed

**Sleeping Mat (44)** **£ 2**  
A man made mat designed for hirer to sleep on the ground in a sleeping bag



**Trangia (22)** £ 3  
A lightweight aluminium cooker, supplied with a Gas conversion kit.  
Gas can be supplied at a cost of £4 per canister.

**Waterproof Jackets (27)** £ 2  
Various sizes

**Waterproof Trousers (31)** £ 2  
Various sizes

**Walking Boots (7)** £2  
Various sizes



**Compass & Whistle (13)** £ 4  
**Compass ( 6)**  
Used to aid navigation when out walking

**Confidence walking ropes (3)** £ 5

**Survival Bags (18)** £ 2  
A polythene waterproof bag (orange in colour) designed to shield the occupant from the elements.

**Group Shelter – Emergency 8 person (3)** £ 4  
An emergency shelter made of waterproof man made material, can accommodate 8 Persons



**Headtorch (8)** £ 4  
A battery-operated torch designed to be worn on the head.  
**Note:** Torches are supplied without the battery.

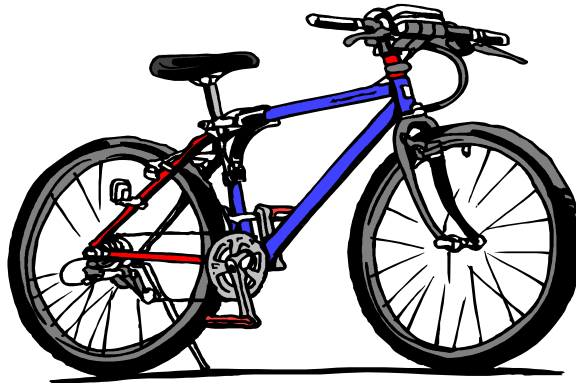
**Billy Sets (2)** £ 6  
This is a set of aluminium circular cooking pots

**Lanterns:** £ 5  
Epigas - without gas (7)  
Pifco - Battery not included (9)

**Mountain Bikes (14)**

**£ 15**

These bikes are of very high quality and come in different frame sizes for young people and adults. We can advise which would best suit your group. Includes Helmet



We can provide OS maps and compasses to go along with suggested route maps for your group if you wish.

**Bikestand (5)**

**Bikestand** – Folding (2)

**High Visibility Vests (15)**

## STAGE EQUIPMENT/VISUAL AID/VIDEO/PHOTOGRAPHY



### **Mobile stage (2)**

**£ 53**

The stage is made up of individual sections each section is made up of a metal frame with a wooden top. Each section is approximately 30cm high and 75cm Square. It can be constructed into any size you wish. The maximum size is 10 m square. 1 Awning is also available.

**Please note** that this is very bulky and heavy. It would be difficult to transport it in a car and that a van is the suggested vehicle used to transport it.

### **Mobile recording equipment**

**£ 32**

Only for use by people who are knowledgeable of equipment

This comprises of the following items

- Headphones (5)
- Headphones Splitter Box. This is a device, which allows you to listen to 1 piece of audio equipment using 2 separate headphones.
- Yamaha DD-11 machine. With power supply unit. It is suggested that you use Korg X5 keyboard with this equipment)

### **Portable Display Boards**

#### **Axis Display Kit (1)**

**£ 16**

A freestanding display board and has 3 separate panels. It is suitable for notices or photographs.

#### **Lightweight Display Board (1)**

**£ 16**

#### **Portable Display Boards (3)**

**£ 16**

#### **Extension Leads (2)**


**£ 6**

A 13amp mains cable supplied on a reel approx. 20 meters in length

#### **Extension Lead – (1)**

4 way



<b>Projection Screens (5)</b>	<b>£ 6</b>
<b>Projectors:</b>	
Elf 16 -A 16mm sound projector (2)	<b>£ 22</b>
Elf – no sound (1)	
Overhead (1)	
Slide Carousel holds 80 slides (1)	
Sanyo PDG-DSU20BLMP with lamp ( LBS Staff only)	
<b>Projector Stand (1)</b>	<b>£ 4</b>
For use with slide carousel or overhead projectors	
<b>Camera</b>	<b>£ 11</b>
3 x Pentax K1000 Manual SLR Cameras With 50mm lens	
1 x Panasonic VDR-D100 DVD Video camera and bag +mini dvd discs available at £2. each when hiring camera	<b>£ 27</b>
<b>Padded case with shoulder strap (2)</b>	 apply for cost
This is a camera case suitable for the Pentax Manual SLR Camera.	
<b>Wide-angle 28mm lenses</b>	apply for cost
This is a lens suitable for the Pentax K1000 SLR Camera	
<b>Camera digital Nikon (1)</b>	apply for cost
Available for hire conditions apply please contact Paul Lalarmy 020 8687 0239	
<b>Camcorders:</b>	<b>£ 27</b>
<b>Panasonic (2)</b>	
<b>Samsung (1)</b>	
<b>Light Box (1)</b>	<b>£ 6</b>
This is a box similar to that used in a photographic shop. It can be used to highlight film negatives. 17” x 23”	
<b>Video Tripod &amp; Dolly (1)</b>	<b>£ 6</b>
<b>Enlarger- Easy Colour M370 (1)</b>	<b>£ 6</b>
P.C. Apple Notebook with IMovie softwareHire.	<b>£ 35</b>

Conditions apply – please contact the Projects Office for more information.

### Climbing/Canoeing/Caving

"Due to the hazardous nature of climbing equipment, canoes and kayaks, the hirer will need to be pre-checked and evidenced as qualified to use them, please contact us at least 2 weeks in advance to confirm your eligibility. Youth Service staff may apply to access this equipment for personal training. Please contact Paul Laramy for further information on 020 8687 0239"



#### Belay Devices:

Air Traffic Controller	(2)
DMM Bug/Lynx	(3)
Figure of 8	(5)
Karabiners – Screwgate	(17)

### Miscellaneous Equipment

#### Alarm Clocks (8)



#### Badge Makers (2)

£ 13

This is a mechanical machine, which can be used to make badges with your own design.

#### Badge Maker Components

£ 13

These components are only useable with the Badge Maker. Each component set consists of all the necessary parts to enable you to make 100 badges.

#### Trailer for minibus when used with an LBS vehicle – \*charges apply

Bookings taken via Jenny Lambert at the Youth office,  
Please contact Jenny at - [jenny.lambert@sutton.gov.uk](mailto:jenny.lambert@sutton.gov.uk)



**Black & Decker Power Drill (1)**

£ 6

This is a mains powered electric drill. It is NOT cordless.

**Black & Decker Electric Screwdriver (1)**

£ 6

This is a rechargeable electric screwdriver

**Black & Decker Wallpaper Stripper (1)**

£ 6

**Dartboards (6)**

£ 4

Darts not included

**Footballs**

£ 6

Indoor (2)

Outdoor (4)

**Parachute (1)**

£ 6

This is typically used in Icebreaker games. Ideal for all ages

**Tablas**

£ 6

Large (1)

Small (1)

**Frying Pans (11)**

£ 6



**Tea Set**

Teapot, cups, saucers, teaspoons, plates

£ 11



**Flasks**

£ 1

2 Stainless Steel,

3 Blue Widemouth

**Induction Loop system- for the hearing impaired (1)**

£ 30

**Orienteering markers (8)**

These are orange plastic markers and are only suitable for orienteering.

**Notice Boards (2)**

Free Standing - 1.4 meters square



## Circus Skills (1)

£ 27

Hired as a complete unit and comprises of the following

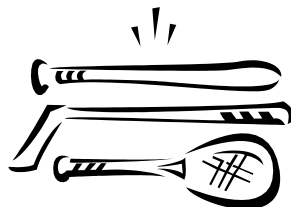
- Fun Wheels: Designed to be used on the floor. This is a device with 2 wheels and 2 separate platforms (1 wheel on each platform), joined together. To use, you place a foot on each platform. To move, you peddle as if sitting on a bicycle. The wheels are approximately 28cm in diameter.
- Pedal-Go: These are similar to the Fun Wheels with the exception that they have 4 small wheels on each platform and the diameters of the wheels are approximately 10cm in diameter.
- Pogo Stick
- Spinning Plates and sticks: These are plastic plates and sticks. The idea is to spin the plastic plate on top of the plastic stick.
- Stilts
- Unicycle: This is a 1-wheeled cycle.
- Juggling items:
  - All of the following items below can be used to learn to juggle.
  - Bean Bags: These are dried beans in a fabric-covered bag
  - Indian Clubs: These are made out of plastic and are similar in shape to a 10 pin bowling pin.
  - Diabolo Stick/String: These look like 2 cups joined at the base (Diabolo). And a piece of string attached to 2 sticks. The idea is that you spin the Diabolo on the string.
  - Flower Sticks

## Cricket Equipment

£ 22

2 Junior Kits containing:

- 8 x leg pads
- 3 x pair gloves
- 1 x cricket ball
- 2 x cricket bats
- 1 x set stumps
- 1 x bail
- 1 x cricket box



2 Senior Kits containing:

- 8 x leg pads
- 6 x pair wicket keepers gloves
- 2 x pair other gloves
- 6 x cricket boxes
- 5 x cricket bat
- 1 x set stumps
- 1 x cricket balls
- 6 x bails

**Resuscitation Anne-little (1)**

**£ 35**

- 1 x Little Anne Manikin blue Carry Bag / training mat
- 1 x Little Anne Manikin
- 1 x instructions for use
- 20 x individual sachets of Manikin wipes
- 10 x individual Resuscitation Face shields

**Resusciation Anne-baby (1)**

**£ 35**

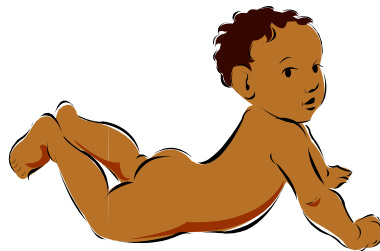
- 1 x Baby Anne Manikin blue carry bag / training mat
- 1 x Baby Anne Manikin
- 1 x instruction use booklet
- 3 x Foreign Objects
- 1 x Spare Airway
- 10 x individual Resuscitation Face Shields
- 20 x individual sachets of Manikin wipes

**Forget Me Not Tots (2)**

**£ 35**

**Contents**

- 28 x Nappies
- 3 x Vest
- 2 x Baby Grow
- 5 X Plastic Pants
- 6 x Terri towelling Nappies
- 1 x Bottle baby lotion
- 1 x Feeding tray
- 1 x Sterliser
- 1 x Sterilising wipes
- 1 x child care folder
- 1 x changing mat



## SKI EQUIPMENT – CHARGES APPLY



Mens	Red	Ski	Jacket	38 R	1	£15.00
Mens	Red	Ski	Jacket	40 R	1	£15.00
Mens	Grey	Ski	Trousers	38R	1	£10.00
Mens	Grey	Ski	Trousers	40R	1	£10
Ladies	Yellow	Ski	Jacket	12	1	£15.00
Ladies	Yellow	Ski	Jacket	12	1	£15.00
Ladies	White	Ski	Trousers	12	1	£10.00
Ladies	White	Ski	Trousers	12	1	£10.00
Ladies	Grey	Snowboard	Trousers	12	1	£10.00
Ladies	Red	Snowboard	Jacket	14	1	£15.00



**FREE FROM THE LONDON BOROUGH OF SUTTON YOUTH SERVICE**  
**POOL EQUIPMENT BOOKING FORM 2008**  
to be sent to [projectsoffice@suttonlea.org](mailto:projectsoffice@suttonlea.org)

Name: \_\_\_\_\_  
Group/Organisation \_\_\_\_\_  
Contact Address: \_\_\_\_\_  
\_\_\_\_\_

Contact Tel Nos: \_\_\_\_\_ (Day) \_\_\_\_\_ (Evening)  
Email address \_\_\_\_\_

Equipment to be hired from: \_\_\_\_\_ To: \_\_\_\_\_  
Date Booked: \_\_\_\_\_

Item	Quantity	Cost Per item	Total
<b>TOTAL</b>			

I wish to hire the above equipment and agree to the conditions of hire as detailed on the website. I understand that if the equipment is not returned by the last date of hire as specified above, there will be a charge.

Name: \_\_\_\_\_  
Signed: \_\_\_\_\_ Date: \_\_\_\_\_

**\* FREE HIRE REQUESTED YES / NO**

**For staff use only:**

**Goods Received:** \_\_\_\_\_ **Goods Returned:** ..... **Date:** .....

**Customer Signature**..... **Staff Signature**.....

**\* FREE HIRE IS AVAILABLE WHEN**

**THE HIRER ACCEPTS FULL RESPONSIBILITY FOR ANY LOSS OR DAMAGE**